

Customer :

customer

Customer part :

customer part

Comment :

Comment

S1=0.02

S2=0.09

Tmax=352

Tp S2=391.0

PI=0.17

HI=90

Sample =8065.5

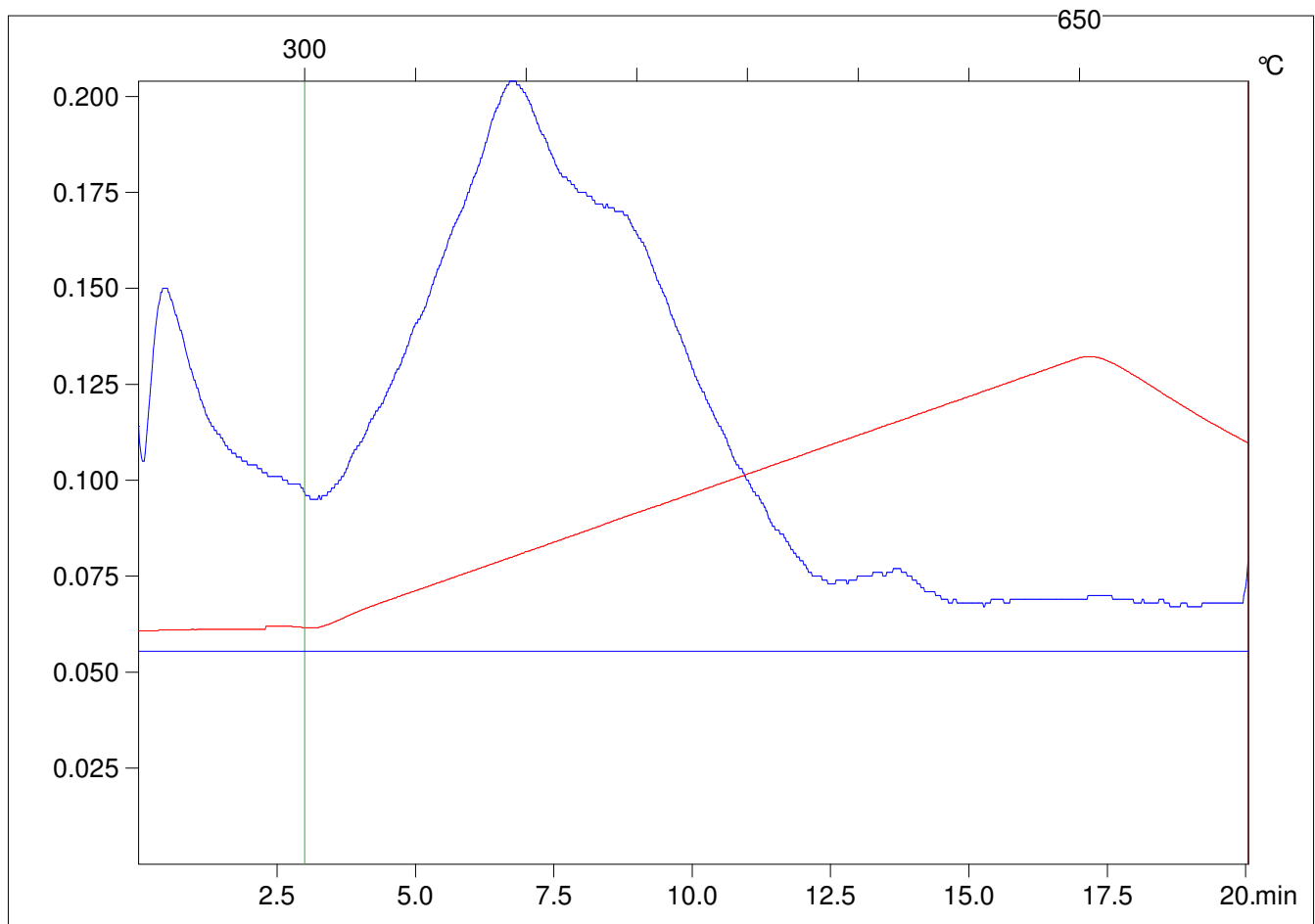
Method =Bulk Rock

Cycle=Basic

KFID(10*9)=1167

Qty =70.6

TOC=0.1



C:\VINC\PK141015\PK012.R00 : FID pyrolysis graphic

State

Pyro Status

Oxi Status